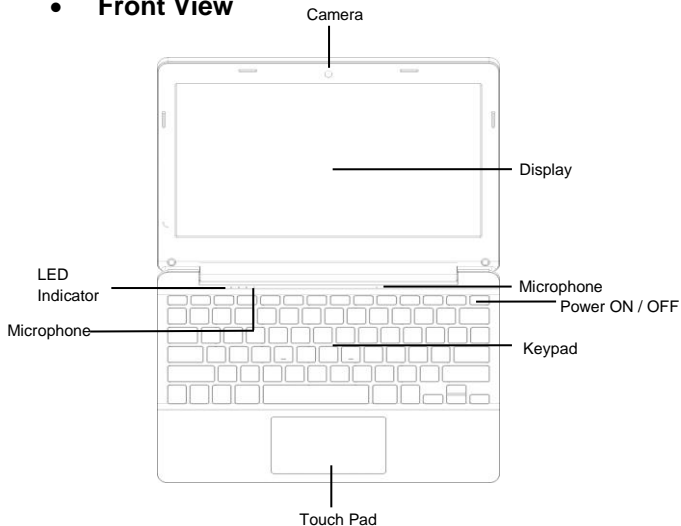


# Specifications

<b>Model</b>	<b>Marvel 6 V2.0</b>	<b>Premio V2.0</b>
Processor	Intel® Celeron® Processor N3350, up to 2.4 GHz	Intel® Pentium® Processor N4200, up to 2.5 GHz
Operating System	Windows 10	
RAM	3 GB DDR3	4 GB DDR3
In-built storage	32 GB	
HDD/SSD Option	Slot to connect 2.5" HDD / SSD	
Micro SD Slot	Expandable up to 128 GB	
Screen Size	35.56 cm (14")	
Resolution	1366*768	
Screen Type	HD Screen	
Touch Pad	Touch Pad with Multi-Touch functionality	
Battery	38 Wh Li-Polymer, 7.6V	
Adapter	DC 12V, 2.0A	
Camera	0.3 MP	
Speaker	Dual Speakers	
Headphone/Mic Jack	Single 3.5mm Combo Jack for Headphone & MIC	
Wi-Fi	Intel® Dual Band Wireless-AC 3165	
Bluetooth	Bluetooth® Ver. 4.0	
HDMI	Mini HDMI Ver. 1.4a	
USB	2 x USB 2.0 & 1 x USB 3.0 port	
Dimensions (WxDxH)	33.4 x 22.2 x 2.4cm	33.4 x 22.2 x 2.4cm
Weight	1.30 kg (W/O HDD)	1.30 kg (W/O HDD)

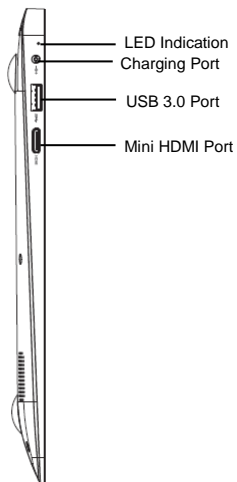
# Know Your CompBook

- **Front View**



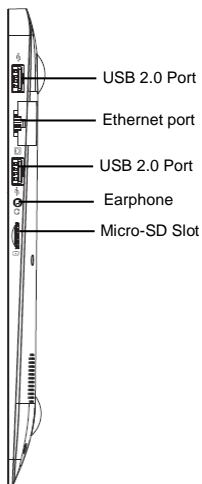
1. Camera: Built-in webcam that allow you to capture video, chat Online, and more.
2. LED Indicators: Power on, Caps Lock and Num Lock indicator
3. Microphone: Built-in microphone that help you for Online Audio /Video calling, and more.
4. Keypad: 78 keys keypad including Internet and MM short keys
5. Touch Pad : Touch Pad with multi touch functionality
6. Display: High quality screen allows you to watch movies, Play Games and more
7. Power ON/OFF: Long press to Power ON / OFF your CompBook, short press to stand-by / wake-up.

- **Left Side View**



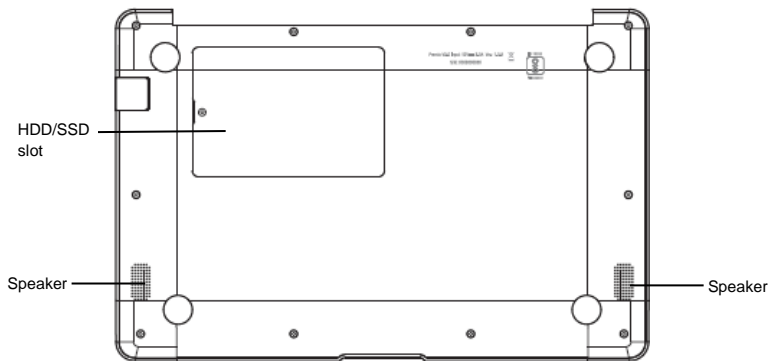
1. LED Indication: Red LED indication for charging.
2. Charging port: 3.5mm power connector to charge your CompBook. Use only Adapter that is provided along with the box.
3. USB 3.0 Port: you can connect any devices (like Mouse, Keyboard, Extn. HDD / SSD, etc.)
4. Mini HDMI port: it allow you to connect any external display device, Like Projector, LCD Monitor, etc. (Cable not included)

- **Right Side View**



1. USB Port: You can connect any devices (like Mouse, Keyboard, Extn. HDD / SSD, etc.)
2. Ethernet port: 10/100 based RJ45 port to connect your device to access the Network.
3. Headphone out Jack: Single/Combo jack for Headset & MIC.
4. Micro-SD slot: expandable up to 128GB

- **Bottom Side View**



1. **Speaker:** Dual Speakers with high quality sound allow you to listen music, watch video, play games, and more.
2. **Slot to connect HDD / SSD:** Expand your storage capacity up to 1TB with provision to affix 2.5" external Hard Disk Drive (For more details, please read separate HDD / SSD installation note bundled in box).

# Introduction to CompBook

When you turn on your CompBook for the first time you will be asked for some basic details to get you started.

Once you have completed the introduction, you'll see the Windows 10 Start

Screen (shown below). The Start Screen is made up of Tiles for all your software, including pre-installed Apps like email, news, etc. as well as your pictures and music library. When you install more Apps, you can add tiles to the Start Screen so you can open them easily



Please note that some Microsoft® Apps may require you to create a Microsoft® ID / Account. Other services or Apps may need their own user credentials.

## Introduction to App Screen

Besides the applications already fixed on the App Screen, you can customize the screen by adding Tiles for other applications installed on your CompBook. To add more applications to the Start Screen, see the steps in the figure below,

- 1) Click the properties icon
- 2) Press and hold the App you wish to add
- 3) Select Pin to start from the sub menu which appears



- 4) If you want to move Tiles, change Tile size or delete a certain application in the start screen,
  1. Press and hold the App Tile for about one second and then let it go
  2. Select Unpin to delete or select the Resize option to change Tile size.



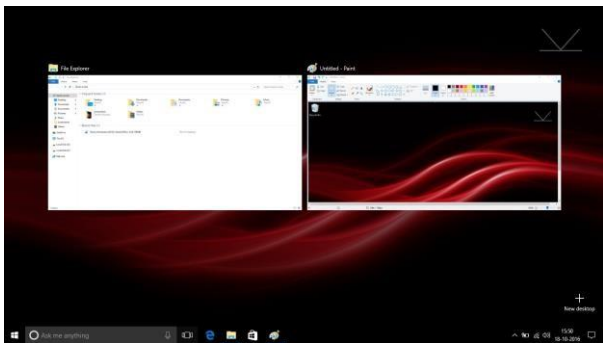
## Action Centre Menu





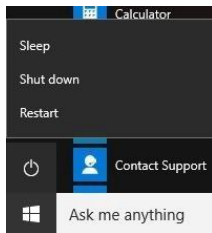
# Multi-tasking screen

Swipe in from the left-hand side of the screen or click the button (highlighted) and you will see the running applications. You can tap an application to jump to it or close an application by pressing the X above its screen preview.



## Basic Operations

1. From the Start menu, click Power to select the 3 power states available - Sleep, Restart and Shut down.
2. You can also press the Power Button once to put your CompBook into sleep mode. Press and hold the Power Button to shut your CompBook down.



## Steps to use ₹ Rupee Symbol

Download the Rupee Keyboard software to your computer from [http://www.iball.co.in/file/product/Drivers/Rupee\\_Keyboard.zip](http://www.iball.co.in/file/product/Drivers/Rupee_Keyboard.zip)

Unzip the “Rupee\_Keyboard.zip” file to any folder on your CompBook

Double click the “Rupee Installer.exe” from the unzipped files and follow the onscreen instructions

This will install four new fonts to your CompBook.

Now, double click the “Keyboard Install.exe” from the unzipped files and wait till the installation is complete

This will install a new keyboard layout in your CompBook

Restart your CompBook, now you can click on the small keyboard icon on bottom right corner of the screen and enable the “Rupee Foradian Keyboard Layout”

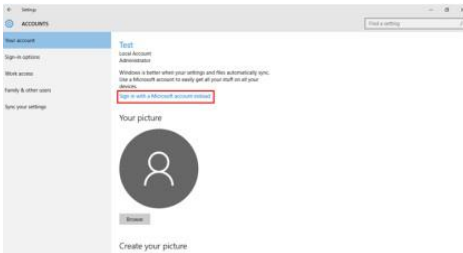
Double check that the “Rupee Foradian Keyboard Layout” is active

Now you can use the key with Rupee symbol printed to type the rupee symbol by selecting the “Rupee Foradian Standard font” in the application you are using. For example, Word, Excel etc.

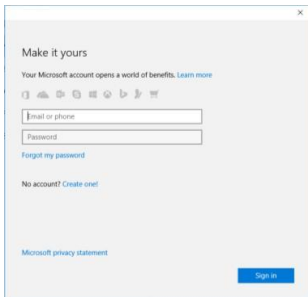
# Using Microsoft Account

When you use Microsoft account to login to the device, you get many more options to use like Web apps, Outlook, Cloud storage (OneDrive) etc.

- A) To login to the Microsoft account you need to go to the settings > Accounts  
In Accounts you will have option as “Sign in with a Microsoft account instead”

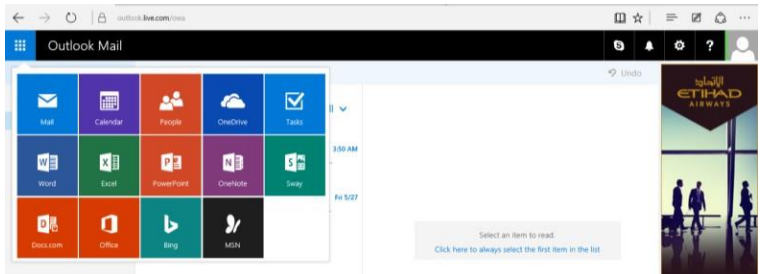


- B) When you click on “Sign in with a Microsoft account instead”, Microsoft login window will open, here you can create new account or Login using your existing one



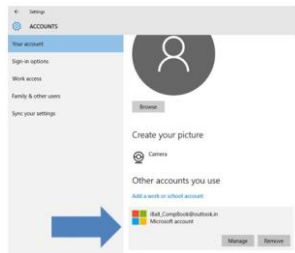
Once you login to Microsoft account, it will ask your current device password, if you have assigned password/pin to your device then enter and click next, If not just click next. You can either use your password or you can also use a PIN as a password.

Once everything is done you can use the default mail app to check your mails or else you just have to start “Microsoft edge” browser and enter “Outlook.live.com”, it will directly log you into your account of Microsoft. You can also use all the web apps provided by the Microsoft in your account.

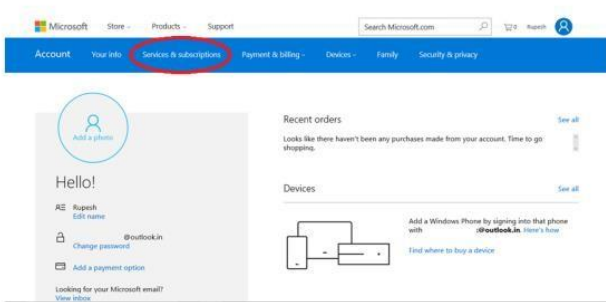


You will also get 5GB OneDrive storage for saving your data using OneDrive app or directly using Web Browser, You can check your drive storage by going to settings>Accounts>Your Account, Here you have to scroll down and go to “Other account you use”.

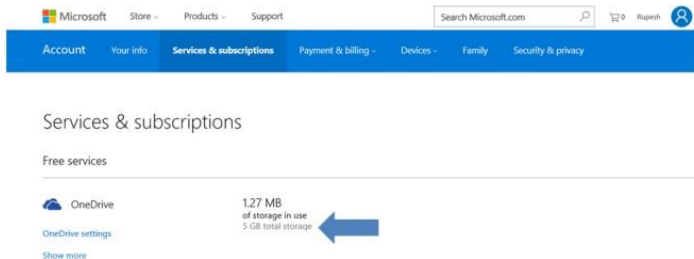
You will see your Outlook account here; Just click on it and click on manage. This will redirect you to your browser and open your account page



Here you need to go to “Services & subscriptions” tab.



You will be redirected to “Services & subscriptions” page where you will see your OneDrive storage details.



# Additional Hardware.

1. Warranty for any additional hardware installed in iBall Comp Book will not be responsible of the iBall.
2. iBall shall not be liable/responsible directly or indirectly for any claim for compensation, damages, any losses etc. due to inconvenience, loss of time, loss of profits, loss of business opportunity, loss of data, loss of goodwill, work stoppage, any personal and / or commercial loss, compensation for mental agony, anxiety etc. (incl. any personal injury or death) resulting from the non-performance of the additional hardware installed.

For more details pls. visit below iBall Website

[http://www.iball.co.in/Warranty\\_Policy](http://www.iball.co.in/Warranty_Policy)

Note:

Do not upgrade/ downgrade the OS pre-installed in the Product.

Any damage and/or corruption of OS and / or Product because of upgrade/downgrade by user, will not be covered under iBall warranty.

# Product and safety information

## Warning

Use only chargers, and accessories approved for use with this particular model. The use of any other types may invalidate any approval or warranty, and may be dangerous. For availability of approved accessories, please check with your dealer.

## Battery and charger information

Your device is powered by a rechargeable Li-Polymer battery. The battery can be charged and discharged many times, but it will eventually wear out. When the working and standby times are noticeably shorter than normal, replace the battery. Use only iBall approved batteries, and recharge your battery only with iBall approved chargers designated for this device. If the battery is being used for the first time or if the battery has not been used for a prolonged period, it may be necessary to connect the charger, then disconnect and reconnect it to begin charging the battery. If the battery is completely discharged, it may take several minutes before the charging indicator appears on the display

# Safety information

1. Please take care not to drop your CompBook and to protect it against sudden impacts.
2. You should avoid using your CompBook in any environment where the air is excessively cold, excessively hot (-10°C ~ 40°C), too humid or too dusty. Avoid prolonged exposure to direct sunlight.
3. Take care not to use your CompBook in areas with strong magnetic fields or around a build-up of static electricity.
4. Do not splash or immerse your CompBook with liquid. If your CompBook becomes wet shut it down immediately and do not use it.
5. If you need to clean your CompBook you should use a clean lint-free soft cloth. Do not use liquids or cleaning agents.
6. No warranty is offered or implied in respect of your data in the event of damage or a fault relating to the use of your CompBook. We recommend you keep a duplicate back-up copy of any important data of your CompBook
7. Your CompBook contains no user-serviceable parts. Please do not attempt to open the case of your CompBook as doing so could be dangerous and will invalidate your warranty



8. Your CompBook supports a wide variety of third-party peripherals including mobile data dongles but you should check compatibility and service provision to make sure they suit your requirements.
9. The battery in CompBook is not user-replaceable. Please do not attempt to use any power source apart from the original charger supplied With your CompBook

# Protect environment

## Save energy

You do not need to charge your CompBook battery so often if you do the following:

- Close applications and data connections, for example, your Bluetooth connection, Wi-Fi when not in use.
- Deactivate unnecessary sounds, such as App Indication and key tones if any.

## E-Waste

iBall reaffirms its commitment to environmental protection by ensuring proper disposal of e-waste / e-waste management. iBall has set up collection centers across India for effective collection of end-of-life products for disposal in a safe and environmental friendly manner. All you have to do is drop your unwanted product at any of our collection centers. To know about our collection center please visit to <http://www.iball.co.in/e-waste>.

# Legal Information

All rights are reserved. Reproduction, transfer, distribution of the contents herein in any manner without the prior written permission of Best IT World (India) Pvt. Ltd. is prohibited. Best IT World (India) Pvt. Ltd. Reserves the right to add, modify or delete, any of the contents herein or withdraw this document at any time without prior notice and without assigning any reason thereof. For detailed terms and conditions refer <http://www.iball.co.in/>

## Product Support



**LIVE CHAT**  
www.iball.co.in



**TECH. SUPPORT**

022-33825100/1860-30042255  
support@iBall.co.in

Product specifications are subject to change without notice • Actual product image may vary from the image shown • All trademarks, logos, brands and product names are properties of their respective owners. • Intel, the Intel logo, Intel Atom, Intel Atom Inside, Intel Inside, and the Intel Inside logo are trademarks of Intel Corporation in the U.S. and/or other countries • Windows is a registered trademark of Microsoft Corporation in the United States and other countries. • All product features specified are as per ideal test conditions. • No claims / damages shall arise directly or indirectly for non-performance / under performance of one or more features specified • This product is sold subject to terms and conditions at [www.iBall.co.in](http://www.iBall.co.in) • All iBall products are governed by iBall Warranty Terms. • This product falls under e-waste (Management & Handling) Rules, 2011. For proper disposal method, visit our website ([www.iBall.co.in/e-waste](http://www.iBall.co.in/e-waste)) • For any technical help on iBall products, please contact [support@iball.co.in](mailto:support@iball.co.in).