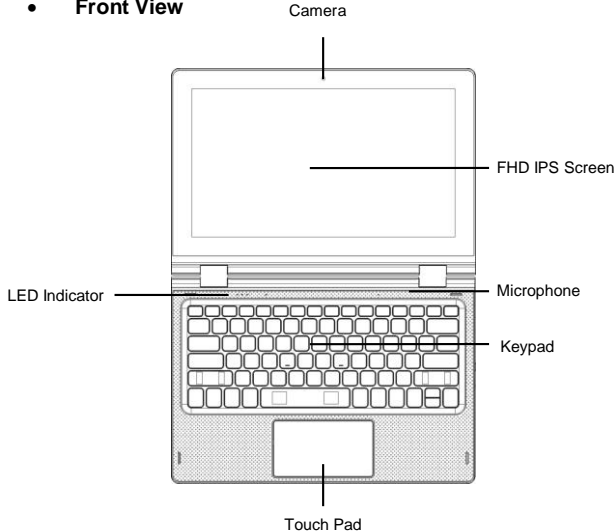


Specifications

Model	iBall CompBook Flip-X5
Processor	Intel® Atom™ Processor, T3-Z8300
Speed	Up to 1.84Ghz
Operating System	Windows 10
RAM	2GB DDR3
In-built storage	32GB
Micro SD Slot	Expandable up to 64GB
Screen Size	29.46cm (11.6")
Resolution	1920*1080
Screen Type	Full HD IPS Display - Full Capacitive touch
Touch Pad	Touch Pad with Multi-Touch functionality
Battery	10,000mAh Li-Polymer Battery, 3.8V
Adapter	DC 5V, 2.5A
Camera	2.0MP
Speaker	Dual Speaker
Headphone / Mic Jack	Single 3.5mm Combo Jack for Headphone & MIC
Wi-Fi	802.11 b/g/n
Bluetooth	Bluetooth Ver. 4.0
HDMI	MINI HDMI Ver.: 1.4
USB Ports	1 x USB 2.0 and 1 x USB 3.0 port
Dimensions (WxDxH)	29.7 x 20.6 x 1.8 cm
Weight	1.37 Kg

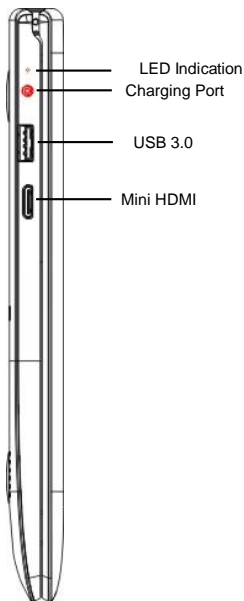
Know Your CompBook

- **Front View**



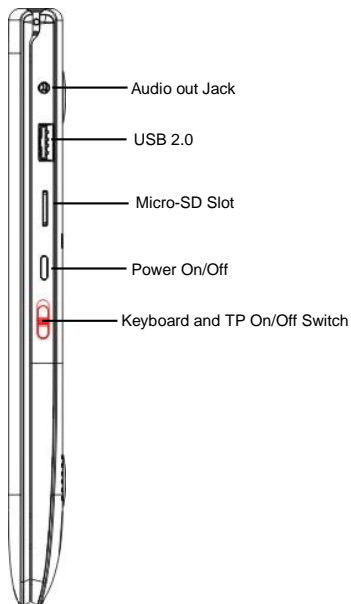
1. **Camera:** Built-in webcam that allow you to capture video, chat online, and more.
2. **LED Indicators:** Power on, Caps Lock and Num Lock indicators
3. **Microphone:** Built-in microphone that help you for Online Audio /Video calling, and more.
4. **Keypad:** 81 keys keypad including Internet and MM short keys
5. **Touch Pad:** Touch Pad with multi touch functionality
6. **Screen:** 11.6" FHD IPS Screen with full capacitive touch. 1920*1080 resolution allows you to watch Full HD movies, Play Games and more.
7. **Power ON/OFF:** Long press to Power ON/OFF, short press to stand-by / wake-up the device.

- **Left Side View**



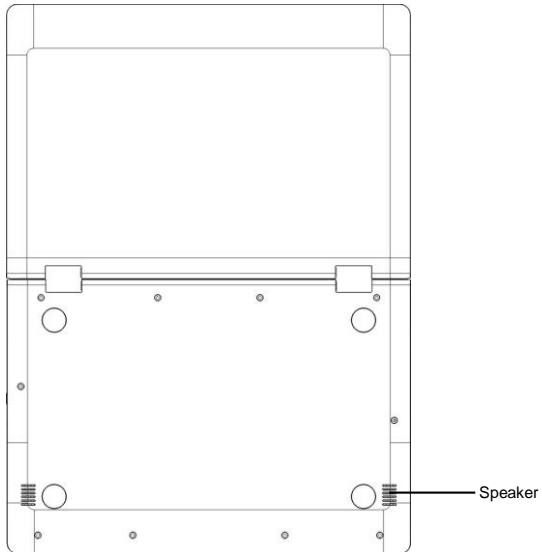
1. LED Indication: Red LED indication for charging
2. Charging port: 3.5mm power connector to charge your device. Use only Adapter that is provided along with the box.
3. USB 3.0 Port: To connect USB devices (like Mouse, KB, HDD, etc.)
4. Mini HDMI port: It allow you to connect any external display device, Like Projector, LCD Monitor, etc. (Cable not included)

- **Right Side View**



1. Audio out Jack: Single/Combo jack for Headset & MIC
2. USB 2.0 Port: To connect USB devices (like Mouse, KB, HDD, etc.)
3. MicroSD/TF card slot: To connect the MicroSD / TF card to expand the built-in storage / copy paste the data.
4. Power On/Off: To Switch On/Off the device
5. Keyboard and TP On/Off Switch: To turn On/Off the Keyboard and Touch panel.

- **Bottom Side View**



1. **Speaker:** Dual Speaker with high quality sound allow you to listen music, watch video, play games, and more clearly without linking an additional device

Usage scenario

360°rotate 360-degree freedom; bring more convenience to the user



Hall-Power

Screen with keyboard to Cover Windows OS Automatically entered into the Sleep.



Introduction to Desktop

When you turn on your CompBook for the first time you will be asked for some basic details to get you started.

Once you have completed the introduction, you'll see the Windows 10 Start Screen (shown below). The Start Screen is made up of Tiles for all your software, including pre-installed Apps like email, news, etc. as well as your pictures and music library. When you install more Apps, you can add tiles to the Start Screen so you can open them easily.

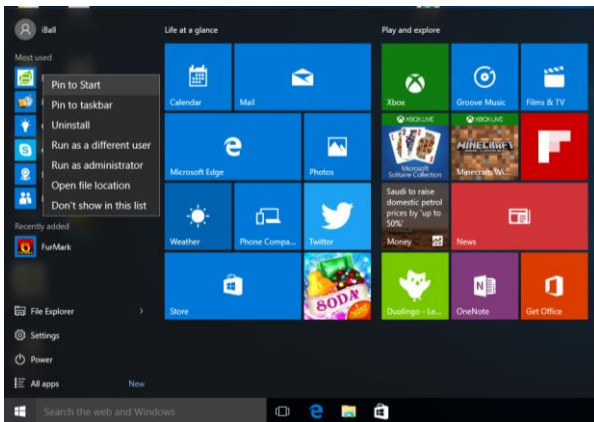


Please note that some Microsoft® Apps may require you to create a Microsoft® ID / Account. Other services or Apps may need their own user credentials.

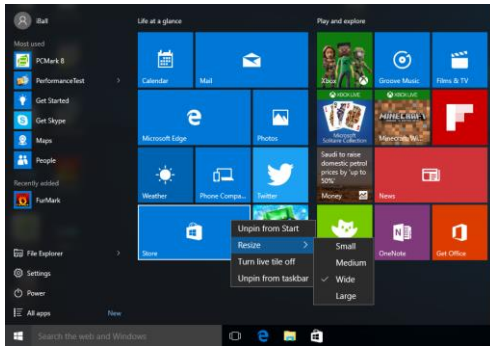
Introduction to App Screen

Besides the applications already fixed on the App Screen, you can customize the screen by adding Tiles for other applications installed on your CompBook. To add more applications to the Start Screen, see the steps in the figure below,

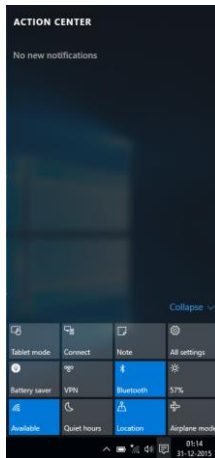
- 1) Click the properties icon
- 2) Press and hold the App you wish to add
- 3) Select Pin to start from the sub menu which appears



- 4) if you want to move Tiles, change tile size or delete a certain application in the start screen,
 - a) Press and hold the App Tile for about one second and then let it go
 - b) Select Unpin to delete or select the Resize option to change tile size.

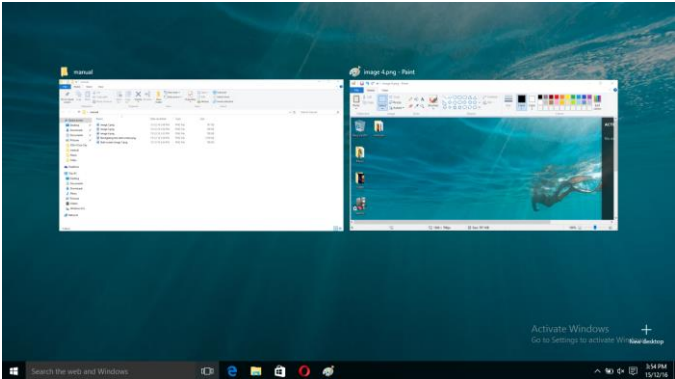


Action Centre Menu



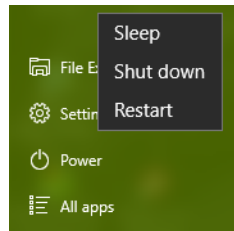
Multitasking screen

Swipe in from the left-hand side of the screen or click the button (highlighted) and you will see the running applications. You can tap an application to jump to it or close an application by pressing the X above its screen preview.



Basic Operations

1. From the Start menu, click Power to select the 3 power states available - Sleep, Restart and Shut down.
2. You can also press the Power Button once to put your CompBook into sleep mode. Press and hold the Power Button to shut your CompBook down.



Steps to use ₹ Rupee Symbol

Download the Rupee Keyboard software to your computer from http://www.iBall.co.in/file/product/Drivers/Rupee_Keyboard.zip

Unzip the “Rupee_Keyboard.zip” file to any folder on your computer

Double click the “Rupee Installer.exe” from the unzipped files and follow the onscreen instructions

This will install four new fonts to your computer

Now, double click the “Keyboard Install.exe” from the unzipped files and wait till the installation is complete

This will install a new keyboard layout in your computer

Restart your computer

Now you can click on the small keyboard icon on bottom right corner of the screen and enable the “Rupee Foradian Keyboard Layout”

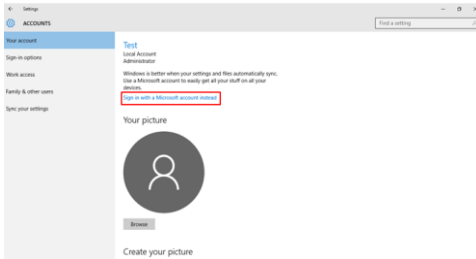
Double check that the “Rupee Foradian Keyboard Layout” is active

Now you can use the key with Rupee symbol printed to type the rupee symbol by selecting the “Rupee Foradian Standard font” in the application you are using. For example, Word, Excel etc.

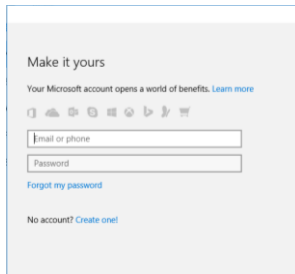
Using Microsoft Account

When you use Microsoft account to login to the device, you get many more options to use like Web apps, Outlook, Cloud storage (OneDrive) etc.

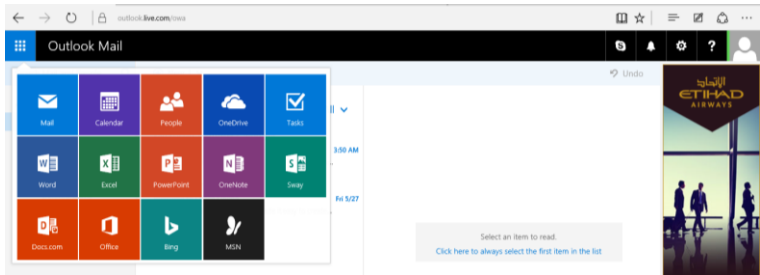
- a) To login to the Microsoft account you need to go to the settings> Accounts In Accounts you will have option as “Sign in with a Microsoft account instead”



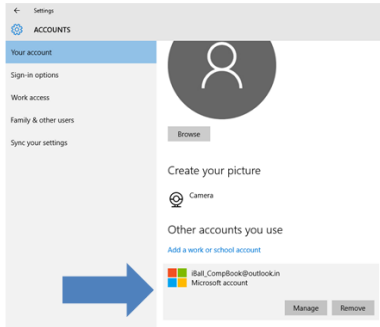
- b) When you click on “Sign in with a Microsoft account instead”, Microsoft login window will open, here you can create new account or Login using your existing one



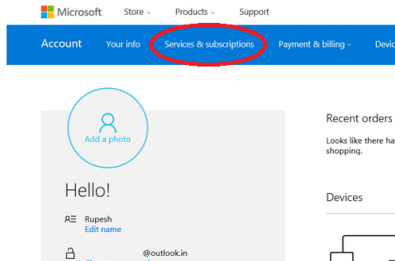
- c) Once you login to Microsoft account, it will ask your current device password, if you have assigned password/pin to your device then enter and click next, If not just click next . You can either use your password or you can also use a PIN as a password. Once everything is done you can use the default mail app to check your mails or else you just have to start “Microsoft edge” browser and enter “Outlook.live.com”, it will directly log you into your account of Microsoft.
- d) You can also use all the web apps provided by the Microsoft in your account



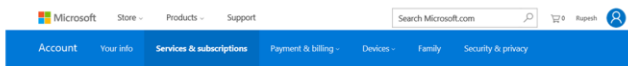
- e) You will also get 5GB OneDrive storage for saving your data using OneDrive app or directly using Web Browser, You can check your drive storage by going to settings>Accounts>Your Account, Here you have to scroll down and go to “Other account you use”. You will see your Outlook account here; Just click on it and click on manage. This will redirect you to your browser and open your account page



1. Here you need to go to “Services & subscriptions” tab.



2. You will be redirected to “Services & subscriptions” page where you will see your OneDrive storage details.



Services & subscriptions

Free services

 OneDrive

[OneDrive settings](#)

[Show more](#)

1,27 MB
of storage in use
5 GB total storage



Product and safety information

Warning

Use only chargers, and accessories approved for use with this particular model. The use of any other types may invalidate any approval or warranty, and may be dangerous. For availability of approved accessories, please check with your dealer.

Please note that the real capacity of built-in storage in this device is 32GB. But it will not show the real capacity as some storage space will be occupied by the EFI (Extensible Firmware Interface) and Recovery partition systems. Also, some storage will be occupied by the OS and its file format system. Therefore, real capacity will not be displayed in the OS.

Customers are expected to regularly / periodically make back-up copies or keep written records of all important content and data stored in the Product(s). The Customer confirms and it will be presumed that the customer has taken back-up copies or kept written records of all important content and data stored in the Product(s) before they are brought to a Service Center for any repair and / or replacement and / or after Sales Service. iBall cannot be held responsible and / or liable for any loss of data and or content before and / or during and / or after any repair and / or replacement and / or after Sales Service.

Battery and charger information

Your device is powered by a rechargeable Li-Polymer battery. The battery can be charged and discharged many times, but it will eventually wear out. When the working and standby times are noticeably shorter than normal, replace the battery. Use only iBall approved batteries, and recharge your battery only with iBall approved chargers designated for this device. If the battery is being used for the first time or if the battery has not been used for a prolonged period, it may be necessary to connect the charger, then disconnect and reconnect it to begin charging the battery. If the battery is completely discharged, it may take several minutes before the charging indicator appears on the display

Safety information

1. Please take care not to drop your CompBook and to protect it against sudden impacts.
2. You should avoid using your CompBook in any environment where the air is excessively cold, excessively hot, too humid or too dusty. Avoid prolonged exposure to direct sunlight.
3. Take care not to use your CompBook in areas with strong magnetic fields or around a build-up of static electricity.
4. Do not splash or immerse your CompBook with liquid. If your CompBook becomes wet shut it down immediately and do not use it.
5. If you need to clean your CompBook you should use a clean, lint-free soft cloth. Do not use liquids or cleaning agents.
6. No warranty is offered or implied in respect of your data in the event of damage or a fault relating to the use of your CompBook. We recommend you keep a duplicate back-up copy of any important data of your CompBook
7. Your CompBook contains no user-serviceable parts. Please do not attempt to open the case of your CompBook as doing so could be dangerous and will invalidate your warranty
8. Your CompBook supports a wide variety of third-party peripherals including mobile data dongles but you should check compatibility and service provision to make sure they suit your requirements.
9. The battery in CompBook is not user-replaceable. Please do not attempt to use any power source apart from the original charger supplied with your CompBook

Protect environment

Save energy

You do not need to charge your CompBook battery so often if you do the following:

- Close applications and data connections, for example, your Bluetooth connection, Wi-Fi when not in use.
- Deactivate unnecessary sounds, such as App Indication and key tones if any.

E-Waste

iBall reaffirms its commitment to environmental protection by ensuring proper disposal of e-waste / e-waste management. iBall has set up collection centers across India for effective collection of end-of-life products for disposal in a safe and environmental friendly manner. All you have to do is drop your unwanted product at any of our collection centers. To know about our collection center please visit to <http://www.iBall.co.in/e-waste>.

Legal Information

All rights are reserved. Reproduction, transfer, distribution of the contents herein in any manner without the prior written permission of Best IT World (India) Pvt. Ltd. is prohibited. Best IT World (India) Pvt. Ltd. Reserves the right to add, modify or delete, any of the contents herein or withdraw this document at any time without prior notice and without assigning any reason thereof. For detailed terms and conditions refer <http://www.iball.co.in/>

Product Support



•Product specifications are subject to change without notice •Actual product image may vary from the image shown • All trademarks, logos, brands and product names are properties of their respective owners. • Intel, Intel Atom, the Intel logo and the Intel Inside logo are trademarks of Intel Corporation in the U.S. and/or other countries. • Windows is a registered trademark of Microsoft Corporation in the United States and other countries. • All product features specified are as per ideal test conditions. • No claims / damages shall arise directly or indirectly for non-performance / under performance of one or more features specified • this product is sold subject to terms and conditions at www.iball.co.in • All iBall products are governed by iBall Warranty Terms. • This product falls under e-waste (Management & Handling) Rules, 2011. For proper disposal method, visit our website (www.iball.co.in/e-waste) • for any technical help on iBall products, please contact support@iball.co.in